



Shelby GT500KR Billet Fuel Door

Installation Instructions - S8M-2301-C

Application: 2005-2009 Ford & Shelby Mustangs

Kit Contents	Description	Qty
	Billet Fuel Door	1

NOTES:

Read All Instructions Before Beginning Installation

Tools needed:

7mm Socket / Ratchet

3/8" combination wrench

Trim tool remover or a pair of side-cutters



To place an order, or for current pricing, call Shelby Performance Parts. For a list of availability or for any other questions about Shelby Performance Parts or our products, visit ShelbyPerformanceParts.com or call our customer service department toll free:

1.702.405.3500 Mon-Fri 8:00 a.m. to 4:30 p.m. - PST

6755 Speedway Blvd
Las Vegas, NV 89115

t: 1.702.405.3500

Satisfaction Guarantee

If you are not happy with this product for any reason or found product to be defective in manufacturing, simply return it to Shelby Performance Parts, Inc. within 30 days of purchase and we will replace it – no questions asked. We stand behind our products one hundred percent, so you can sit behind in the wheel with pride.

**YOU MUST call Shelby Performance parts Customer Service for a Return Authorization (RA) before returning any product. Proof of purchase and dated receipt must be present with any return. All returned products are tested and if found to be damaged by the installer, no replacement will be issued. You pay the cost to ship to us, we pay for the return shipping. Guarantee does not include any labor and/or tax charges.*

Installation Instructions

Step 1: No smoking, sparks, or open flames during installation!! With the car off, start by opening the factory fuel door, and removing the gas cap to fuel door retaining line with the trim tool remover or side cutters. Leave the gas tank cap in place. If desired, you can re-install the lanyard line onto one of the studs of the new door during assembly.

Step 2: Using the 7mm socket, remove the two bolts that hold the factory fuel door to the quarter panel sheet metal. Hold the door while doing this so it does not drop and damage itself or the quarter panel. After safely removing the factory door, remove the rubber bump-stops for the door as well.

Step 3: Remove the nuts from the new fuel door, and remove the washers and Delrin spacers. Leave the studs in place. Once removed, re-stack as shown in Fig.1-2 on the fuel door. Assemble the door to the car, with the door open to help in alignment. Once it is in place, stack the delrin spacers on the inside of the quarter panel, followed by the appropriate nuts. Once assembled by hand, use the 3/8" wrench to tighten using sufficient pressure to pull the door into final alignment. Loc-Tite is recommended on studs to insure piece does not loosen on car, and is already used on studs where they attach to the fuel door.

Figure 1:

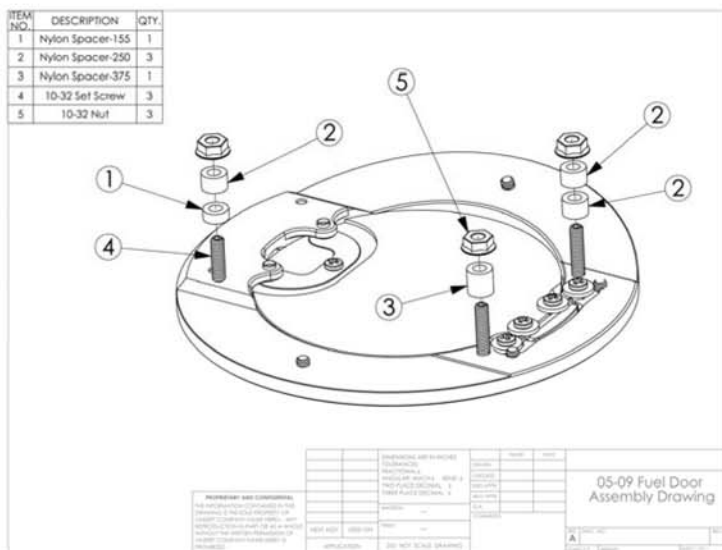
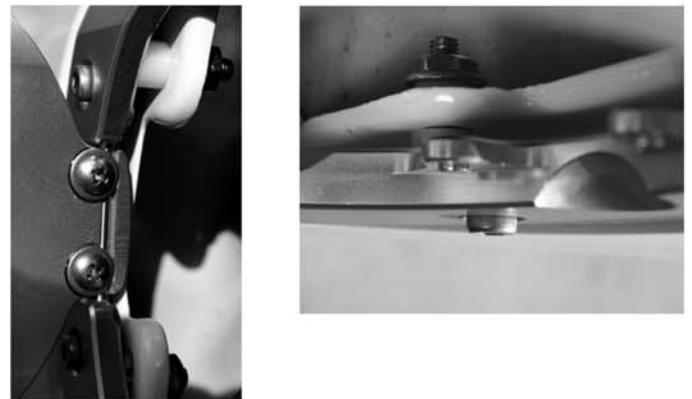


Figure 2:



Step 4: Remove tools, close the door, and enjoy! Fuel doors are anodized or optionally plated for a long life, and normal care, maintenance, and periodic lubrication of the hinge mechanism will extend their life even more. Do not forget your gas cap when fueling vehicle, as it will no longer remain attached to the car if you did not re-use the lanyard line.