



Installation Instructions

GT350 Transmission Cooler Scoop

Part Number: SHELBY-30

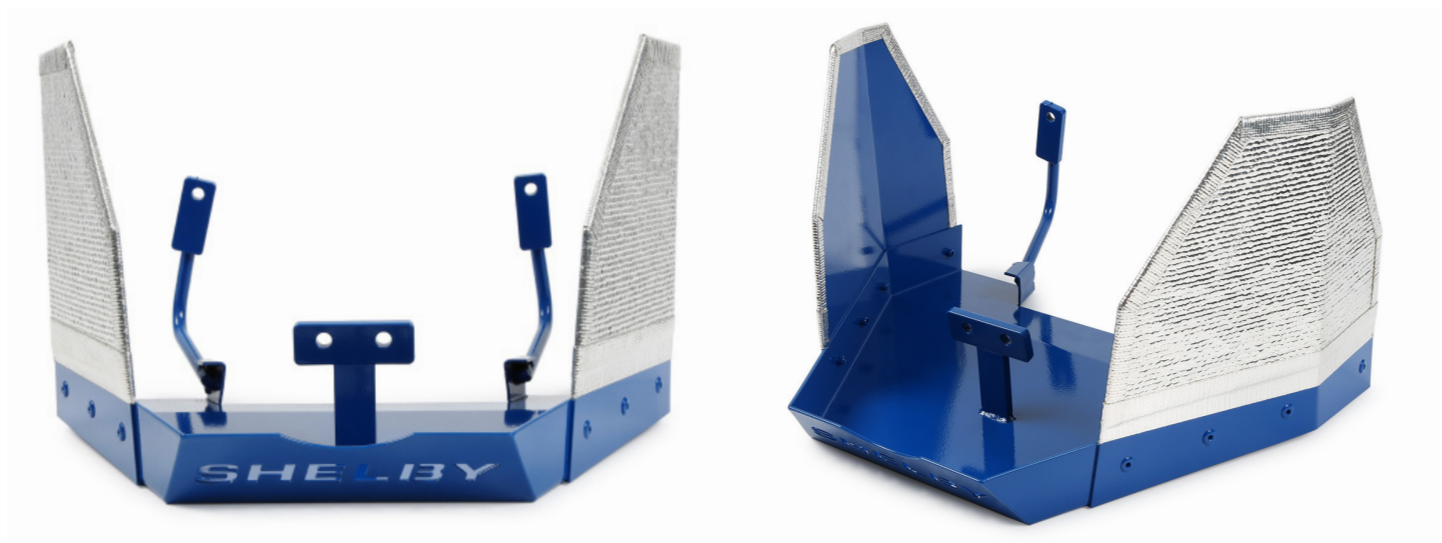
Application: 2015-17 Shelby GT350

INTRODUCTION

Congratulations on the purchase of the GT350 Transmission Cooler Scoop. Developed by our R&D team with professional craftsmanship, the transmission air cooler is designed to bring cold air up and directly on the vehicles transmission to improve cooling and maintain performance.

KIT CONTENTS

- 1 transmission cooling scoop
- 2 M8 x 1.25 x 20M bolts
- 2 M6 Flange nuts



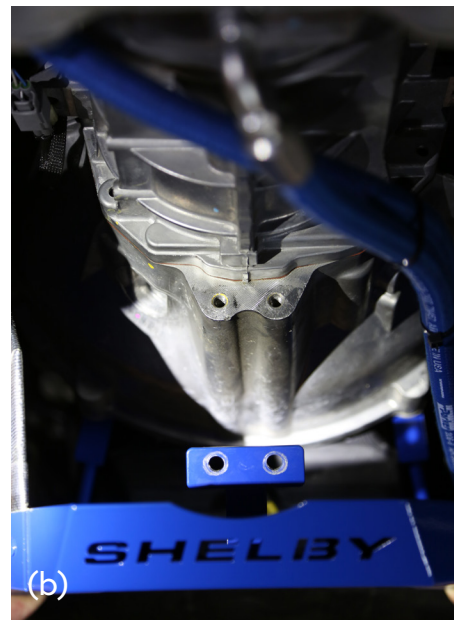
TOOLS REQUIRED

- 10mm open end box wrench
- 10mm socket 1/4" drive
- 1/4" drive 6" extension
- 1/4" drive ratchet
- 13mm socket

STEP ONE:

(a) Slide two front tabs over existing studs on the front of the lower transmission. **Do NOT allow the transmission scoop to hang freely at any time during installation by these front tabs or they could bend, resulting in fitment and alignment issues.**

(b) Align rear bracket with two existing transmission housing bolt holes. Install bolts hand tight. Install front nuts on existing studs hand tight.



STEP TWO:

Ensure pan is sitting level and tighten front nuts. **The pan being level is very important for proper alignment and to ensure no rubbing or vibrating of the scoop's fins on the vehicle.** Complete by tightening rear bolts.

